

Key Features of DAEMO Pulverizer



DAEMO

Features of DAEMO Mini Crusher

DMC11 & DMC31 & DMC51

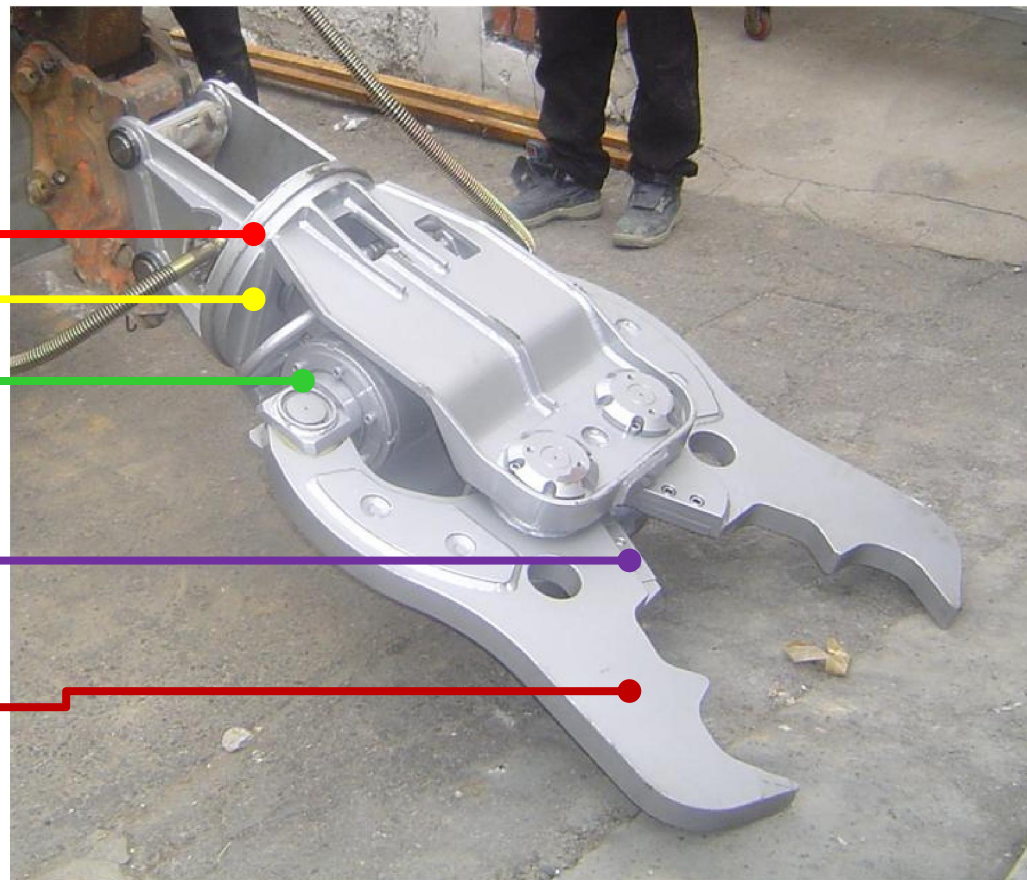
1. Free Rotating

2. High Speed Up Valve (Option)

3. One Cylinder

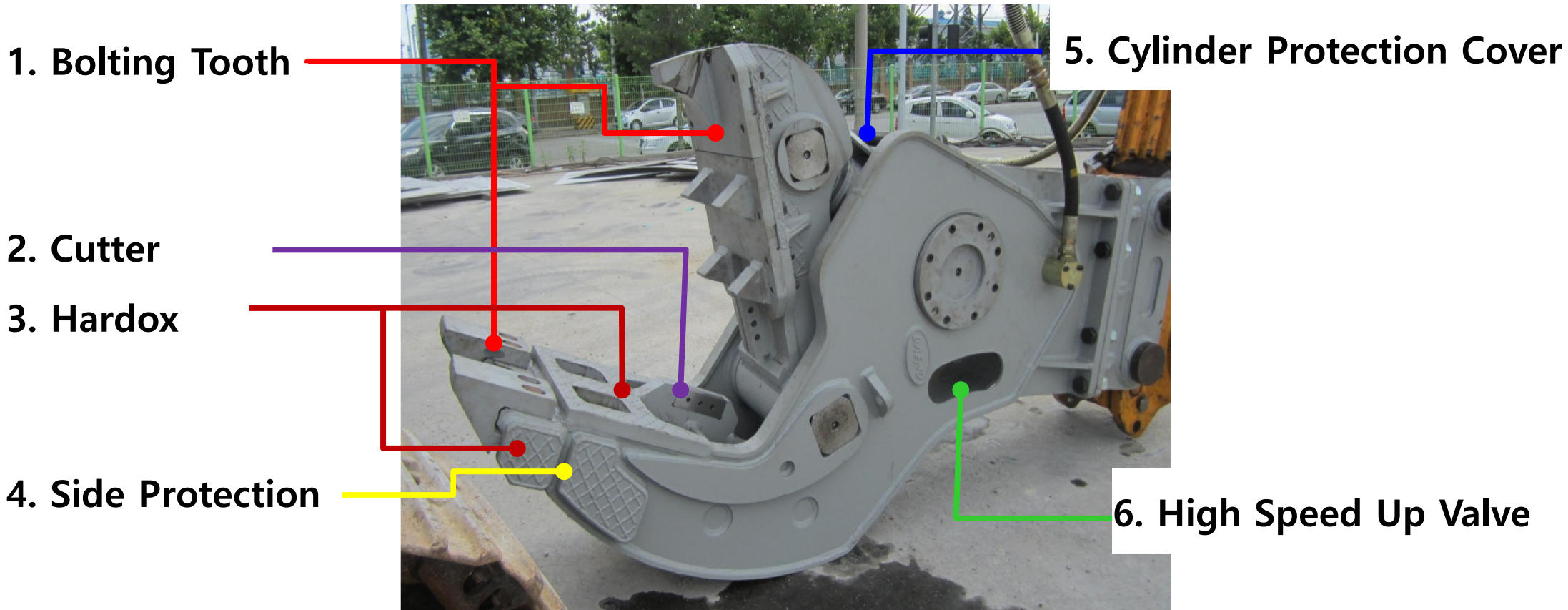
4. Cutter

5. ARM with HARDOX



Features of DAEMO Fixed Crusher

DMC140B & DMC180B & DMC210B & DMC300B

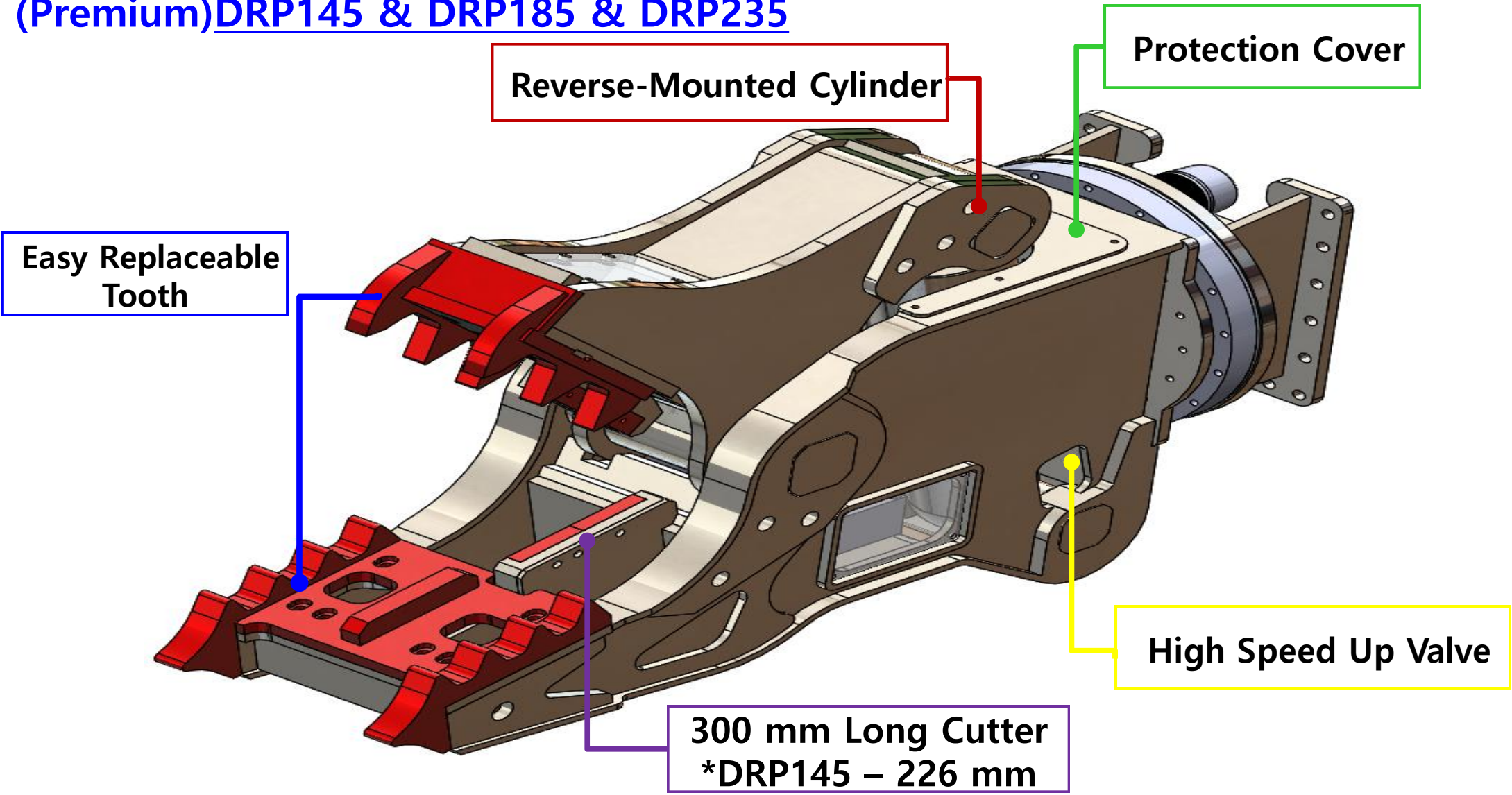




Product – DRP

Who Dares to speak of
Demolition Power!

Features of **DAEMO Rotating Pulverizer** (Premium) DRP145 & DRP185 & DRP235



Features of DAEMO Rotating Crusher

DMC330RB

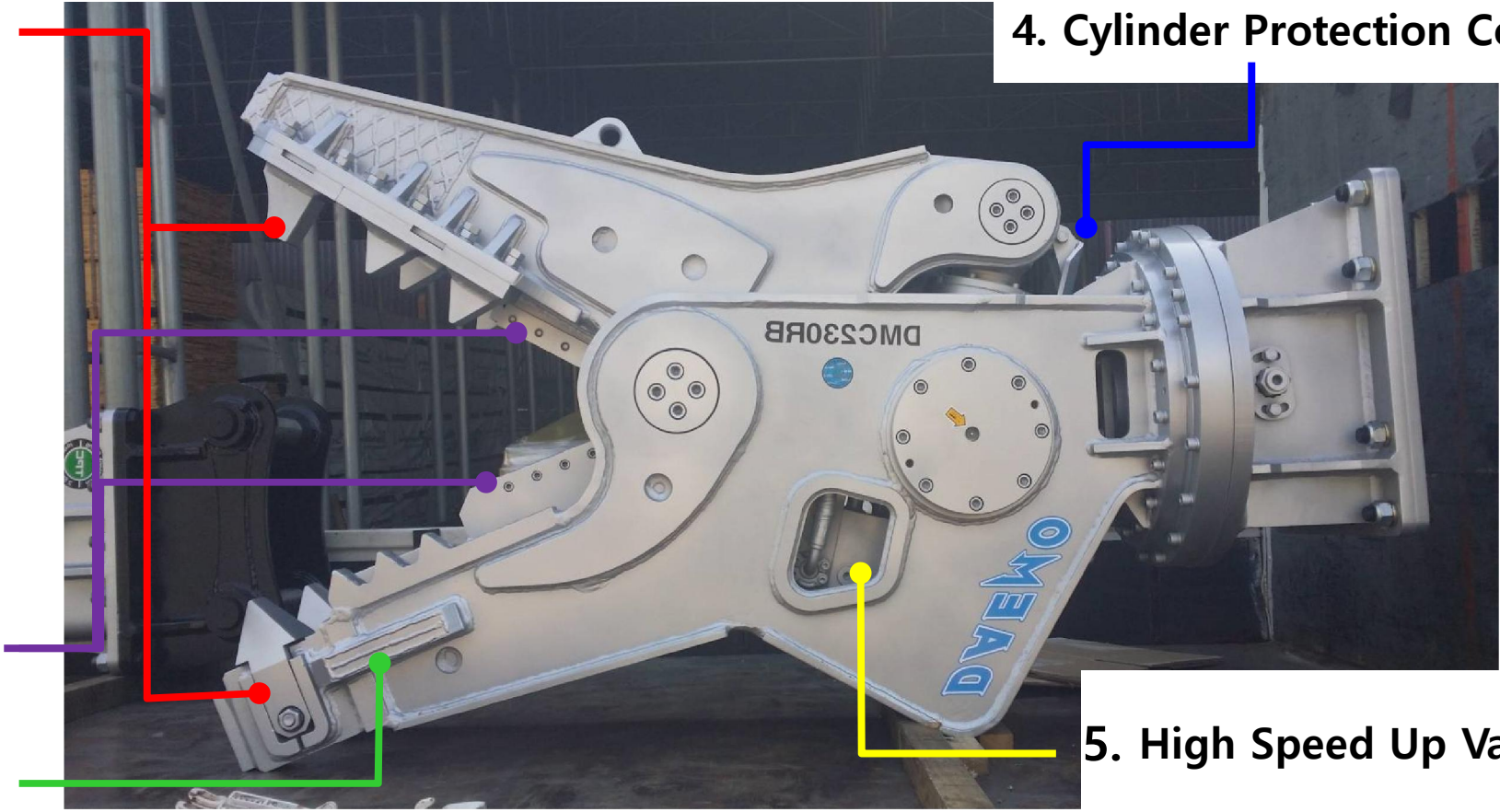
1. Bolting Tooth on Both Arms

2. Cutter For Cutting Steel

3. Side Protection

4. Cylinder Protection Cover

5. High Speed Up Valve



Specification

DESCRIPTION		DMC11	DMC31	DMC51
Type		Free Rotating	Free Rotating	Free Rotating
Operating Weight	Kg	170	310	420
Overall Length	mm	1058	1287	1432
Max. Opening Width	mm	360	430	530
Crushing Force(End)	ton	22	28	32
Suitable Excavator	ton	1.7 ~ 3	3.5 ~ 5	4.5~ 8

DESCRIPTION		DMC140B	DMC180B	DMC210B	DMC300B	DMC330RB
Type		Fixed	Fixed	Fixed	Fixed	Rotating
Operating Weight	Kg	1,350	1,450	1,980	2,600	3,100
Overall Length	mm	1,945	2,020	2,222	2,380	2,685
Max. Opening Width	mm	612	728	784	915	890
Crushing Force(End)	ton	42	44	57	73	73
Suitable Excavator	ton	13 ~ 20	16 ~ 23	19 ~ 28	29 ~ 43	29 ~ 50

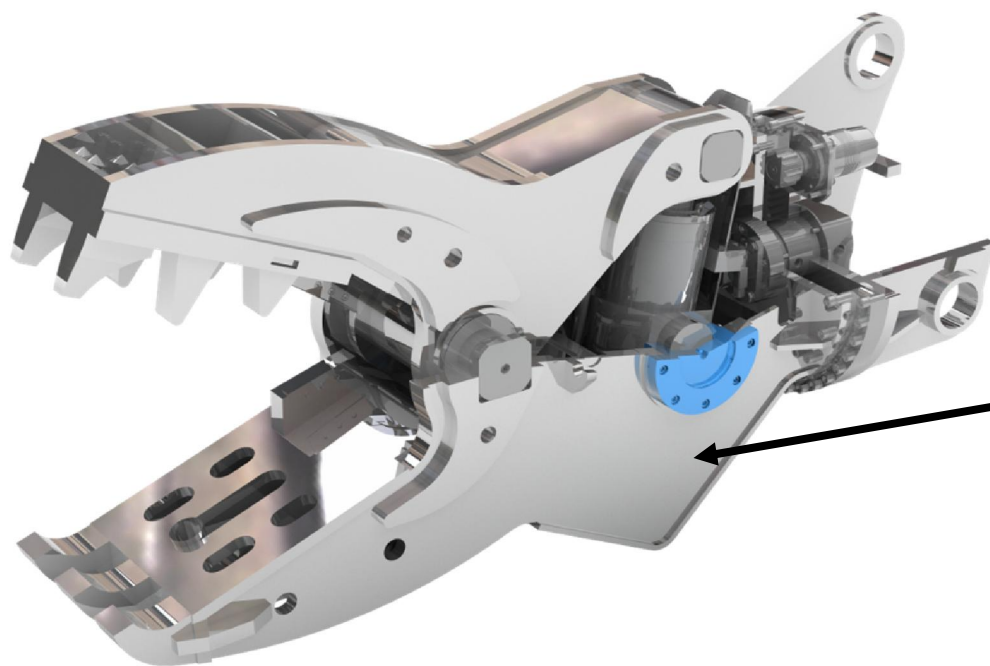
Specification

DESCRIPTION		DRP145	DRP185	DRP235	
Weight (W/O Mounting Head Cap)	(Kg)	1,350	1,700	2,200	
Max. Opening Width (From Tip/Bottom of tooth)	(mm)	640 /720	740 / 900	800 / 960	
Overall Length	(mm)	1,845	1966	2,177	
Cutter Lengg	(mm)	226	300	300	
Crushing Force (Tip)	(ton)	70	85	110	
Operating Pressure	(Kg/cm ²)	320	320	320	
Oil Flow Rate	(LPM)	130~220	180~220	220~280	
High Speed up Valve		S.T.D	S.T.D	S.T.D	
Available Excavator	(ton)	13~20	18~28	24~32	
ROTATING HYDRAULIC MOTOR	Motor Setting Pressure	(Kg/cm ²)	120	120	120
	Motor Oil Flow Rate	(LPM)	15~20	15~20	15~20
	Revolving Speed	(RPM)	8 ~ 10	8 ~ 10	8 ~ 10

Speed Up Valve (Option)

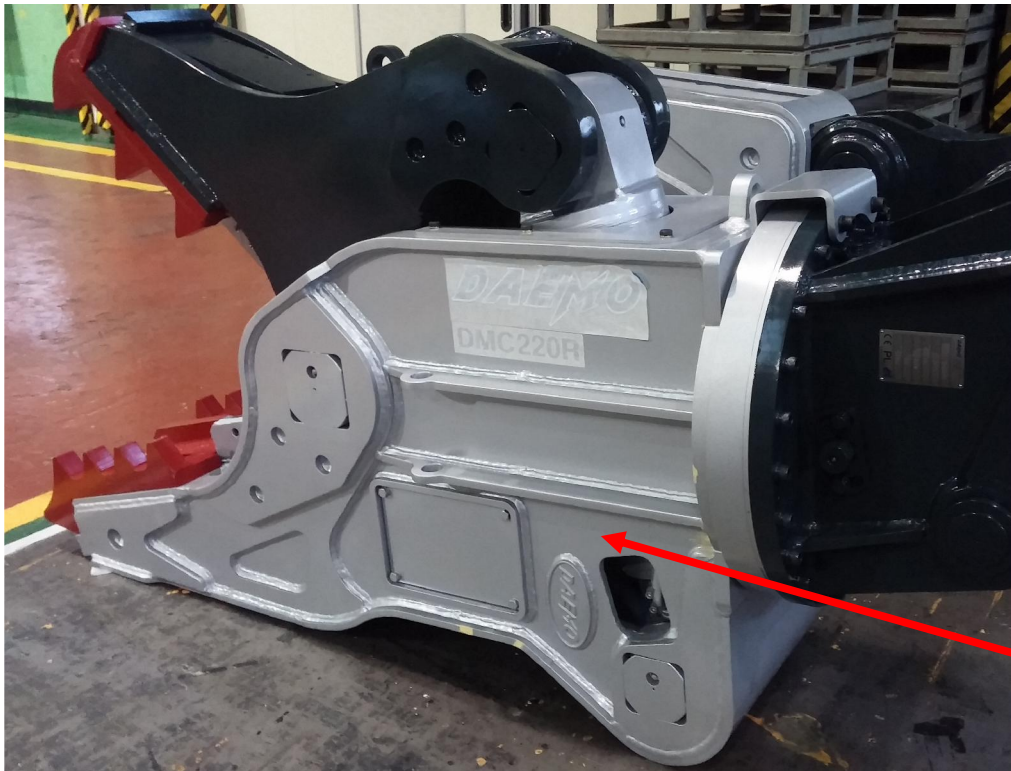
Unit: Sec

	DMC11	DMC31	DMC51	DMC140B	DMC180B	DMC210B	DMC300B	DMC330RB
Opening	3.7	3	2.5	2	2.6	2.6	3.5	2.7
Closing								
With Speed Up Valve	2.1	2.4	2	1.4	1.5	2.3	2.2	3.5
Based Oil Flow (LPM)	30	50	100	200	200	220	260	260



High Speed Up Valve

High Speed Up Valve (Standard)



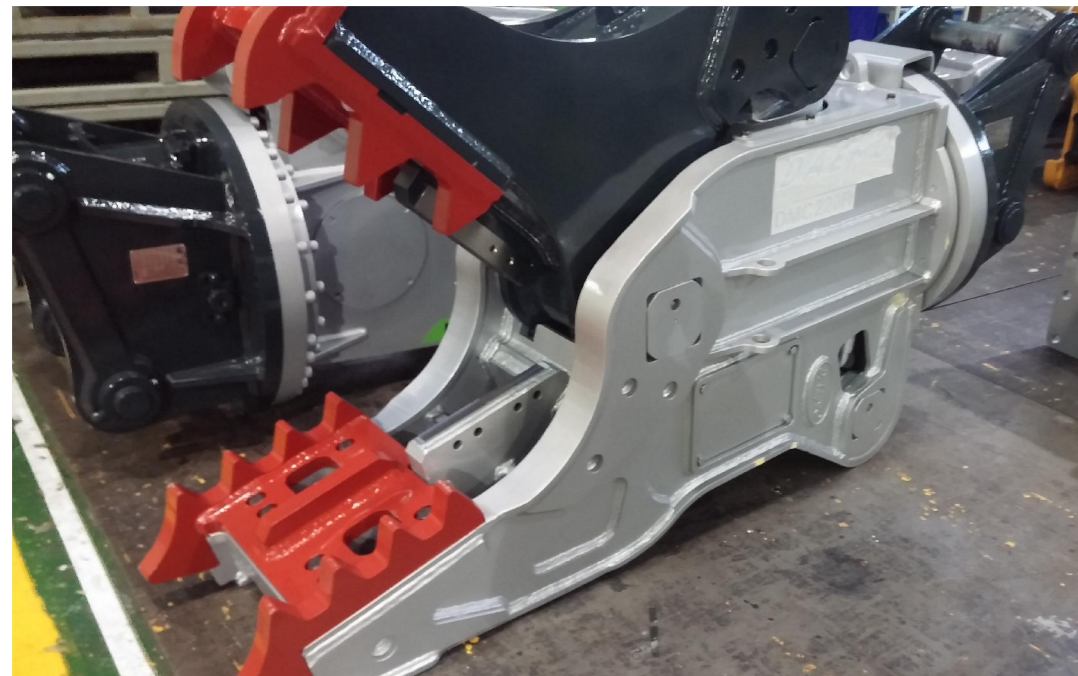
Unit: Sec

	DRP145	DRP185	DRP235
Opening	1.5	1.8	1.6
Closing			
With Speed Up Valve	1.5	1.7	1.8
Pressure	320	320	320



High Speed Up Valve

Pictures



Pictures



Pictures



Thank you

The human-centered world
Daemo opens it up.

The Global leader,
Daemo Engineering makes it come true.

